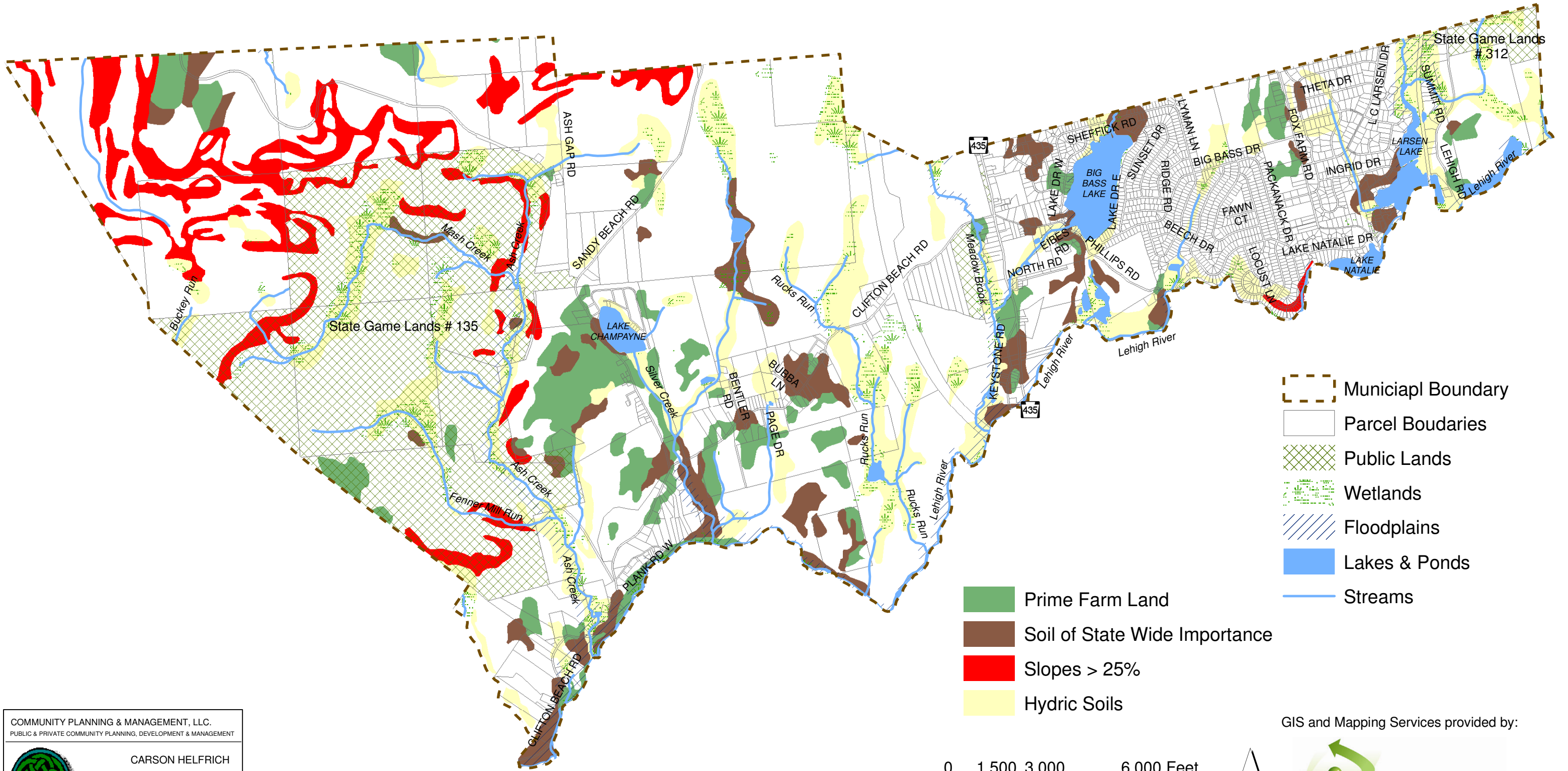


Clifton Township Lackawanna County Conservation Opportunities

DRAFT



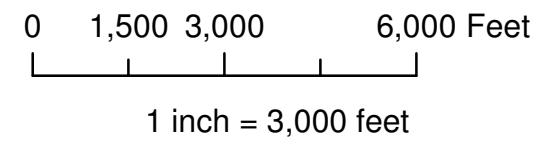
- Municipal Boundary
- Parcel Boundaries
- Public Lands
- Wetlands
- Floodplains
- Lakes & Ponds
- Streams

- Prime Farm Land
- Soil of State Wide Importance
- Slopes > 25%
- Hydric Soils

COMMUNITY PLANNING & MANAGEMENT, LLC.
PUBLIC & PRIVATE COMMUNITY PLANNING, DEVELOPMENT & MANAGEMENT

CARSON HELFRICH
HCR #1 BOX 59, PAUPACK, PA 18451
570-857-0282 (telephone & fax)
carson@communityplanning.biz
communityplanning.biz

WORKING TOGETHER FOR BETTER COMMUNITIES



GIS and Mapping Services provided by:



April 2009