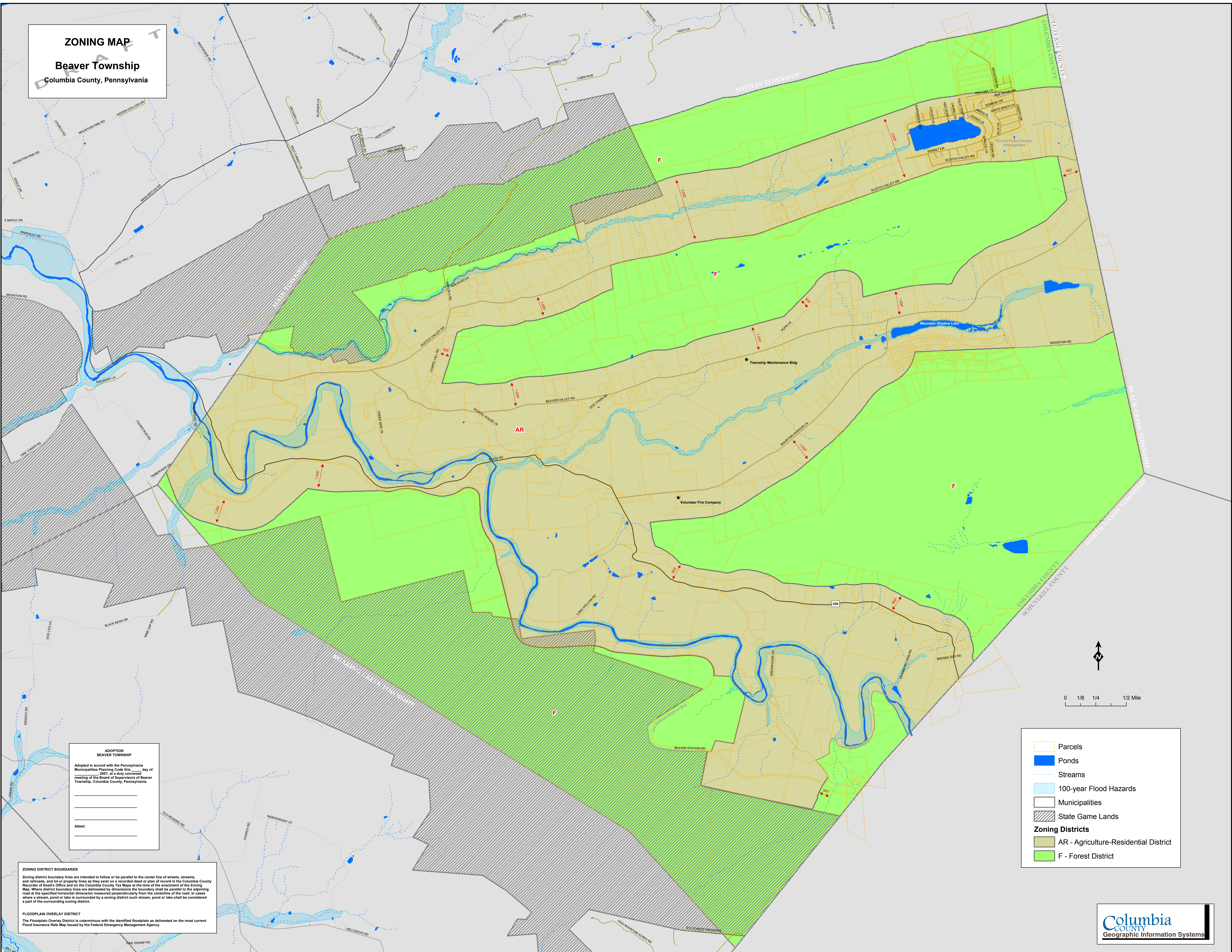


ZONING MAP
Beaver Township
 Columbia County, Pennsylvania

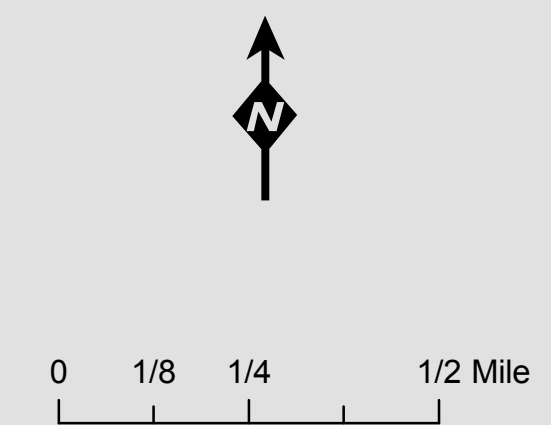


ADOPTION
BEAVER TOWNSHIP
 Adopted in accord with the Pennsylvania Municipalities Planning Code, Act 207, at a duly convened meeting of the Board of Supervisors of Beaver Township, Columbia County, Pennsylvania.

Attest: _____

ZONING DISTRICT BOUNDARIES
 Zoning district boundary lines are intended to follow or be parallel to the center line of streets, streams, and railroads, and lot or property lines as they exist on a recorded deed or plan of record in the Columbia County Recorder of Deeds' Office and on the Columbia County Tax Maps at the time of the enactment of the Zoning Map. Where district boundary lines are delineated by dimensions the boundary shall be parallel to the adjoining road at the specified horizontal dimension measured perpendicularly from the centerline of the road. In cases where a stream, pond or lake is surrounded by a zoning district such stream, pond or lake shall be considered a part of the surrounding zoning district.

FLOODPLAIN OVERLAY DISTRICT
 The Floodplain Overlay District is coterminous with the identified floodplain as delineated on the most current Flood Insurance Rate Map issued by the Federal Emergency Management Agency.



- Parcels
- Ponds
- Streams
- 100-year Flood Hazards
- Municipalities
- State Game Lands
- Zoning Districts**
- AR - Agriculture-Residential District
- F - Forest District