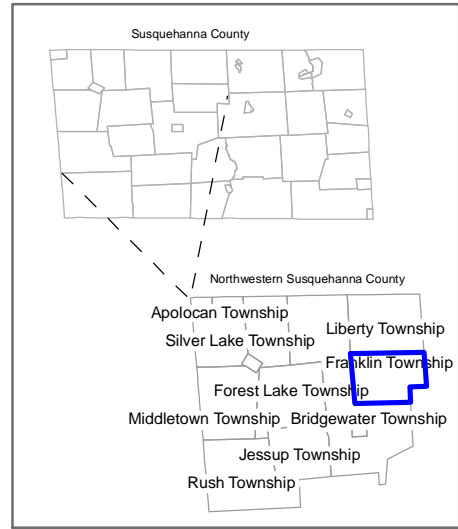
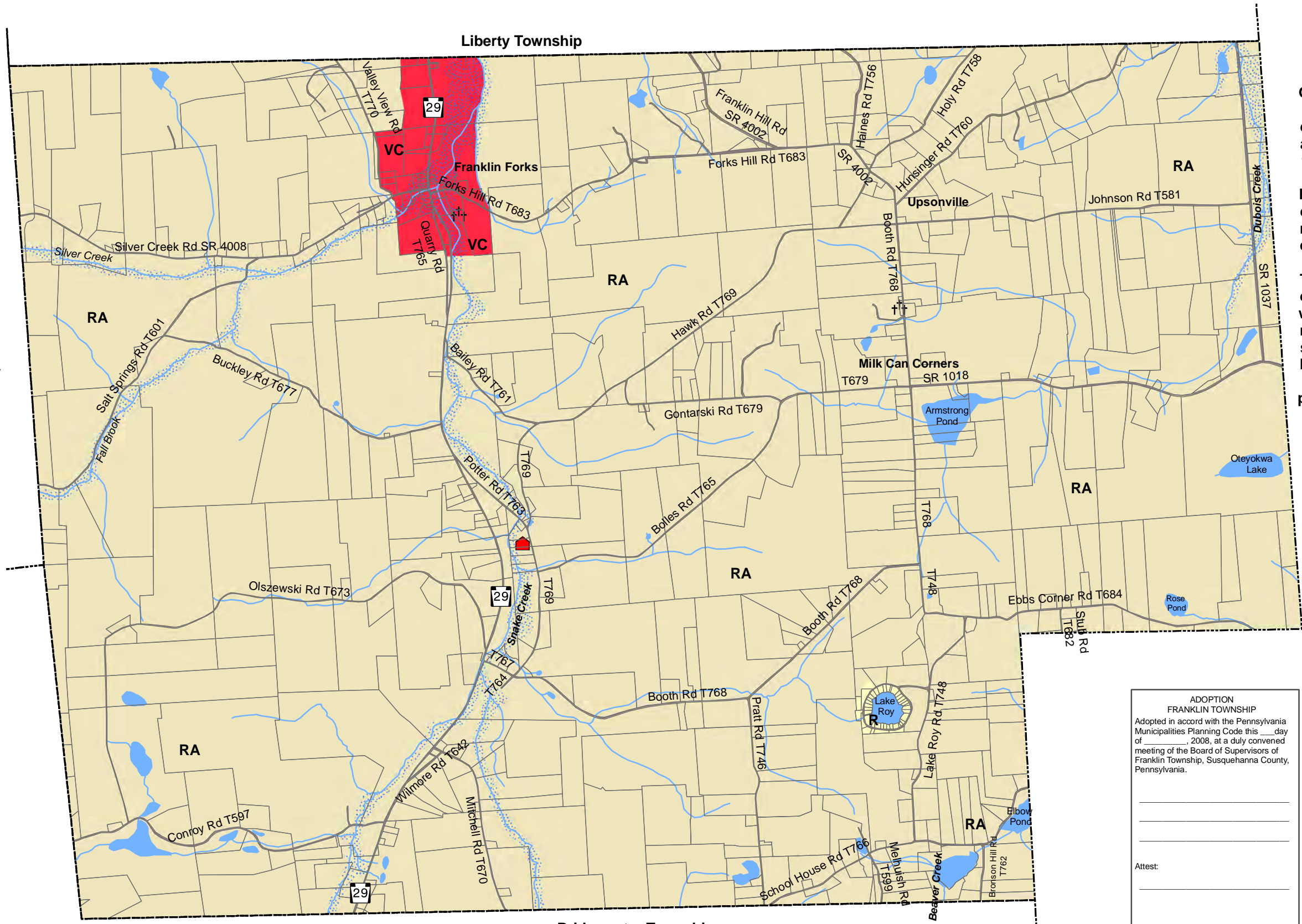


Silver Lake Township

Great Bend Township



DRAFT

**Legend**

- Municipal Boundaries
- Parcels
- Township Building
- Cemetery
- Lakes
- Streams

**ZONING DISTRICTS**

- Floodplain Overlay District
- R - Residential District
- RA - Rural-Agricultural District
- VC - Village Commercial District

ADOPTION  
FRANKLIN TOWNSHIP

Adopted in accord with the Pennsylvania Municipalities Planning Code this \_\_\_ day of \_\_\_\_\_, 2008, at a duly convened meeting of the Board of Supervisors of Franklin Township, Susquehanna County, Pennsylvania.

Attest:

This Zoning Map has been adopted in cooperation with other municipalities of the Northern Tier Coalition by intermunicipal cooperative agreement under the terms of the Northern Tier Coalition Comprehensive Plan.

**FRANKLIN TOWNSHIP**  
SUSQUEHANNA COUNTY, PENNSYLVANIA

**OFFICIAL ZONING MAP**  
2008

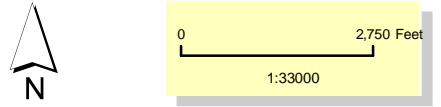
COMMUNITY PLANNING & MANAGEMENT, LLC  
PUBLIC & PRIVATE COMMUNITY PLANNING, DEVELOPMENT & MANAGEMENT

CARSON HELFRICH  
HCR #1 BOX 59, PAUPACK, PA 18451  
570-857-0282 (telephone & fax)  
carson@communityplanning.biz  
communityplanning.biz

WORKING TOGETHER FOR BETTER COMMUNITIES

GIS and Mapping services provided by:

**Pocanocs**



**ZONING DISTRICT BOUNDARIES**

Zoning district boundary lines are intended to follow or be parallel to the center line of streets, streams, and railroads, and lot or property lines as they exist on a recorded deed or plan of record in the Susquehanna County Recorder of Deed's Office and on the Susquehanna County Tax Maps at the time of the enactment of the Zoning Map. Where district boundary lines are delineated by dimensions the boundary shall be parallel to the adjoining road at the specified horizontal dimension measured perpendicularly from the centerline of the road. In cases where a stream, pond or lake is surrounded by a zoning district such stream, pond or lake shall be considered a part of the zoning district.