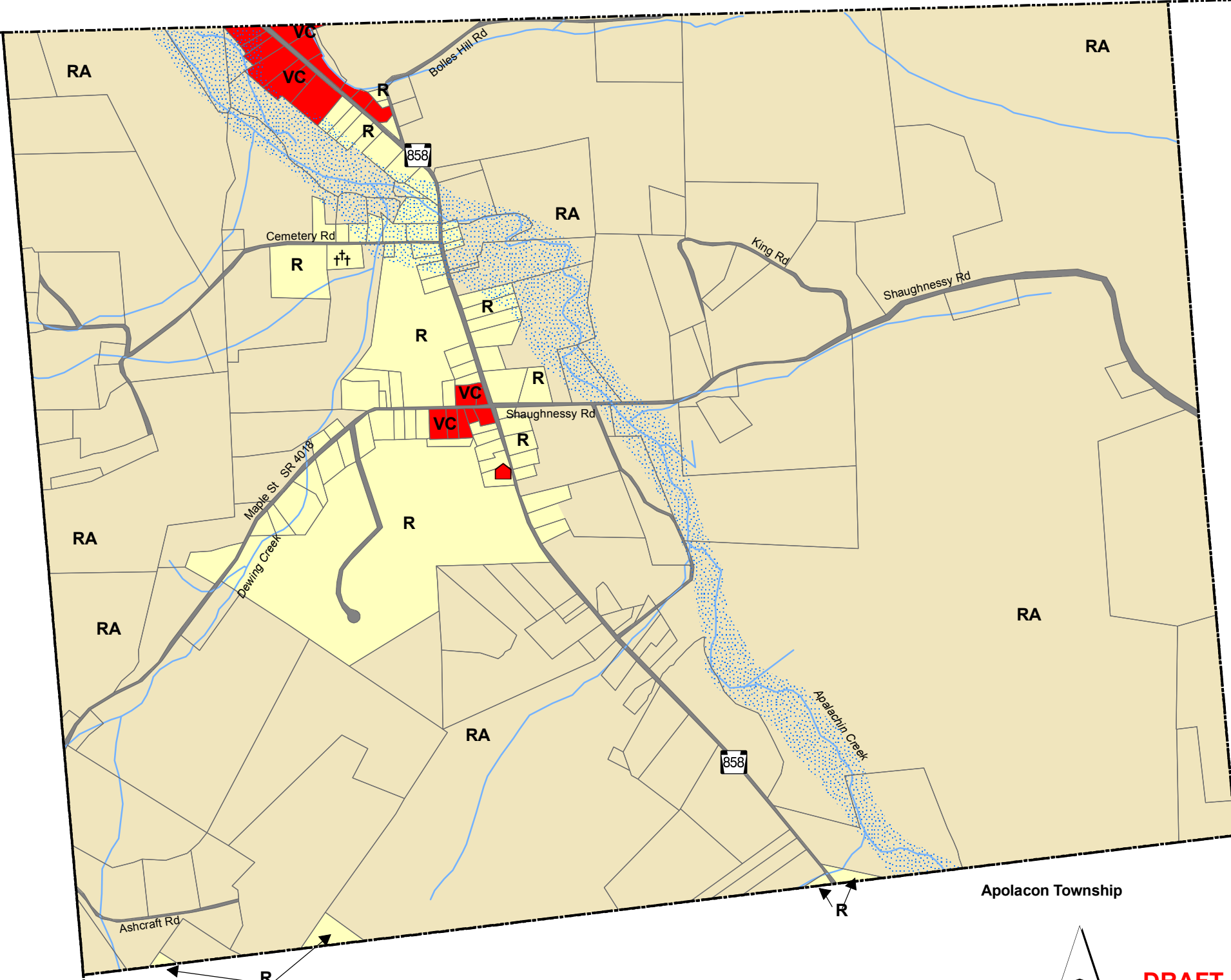


New York State

Warren Township

Bradford County



**ADOPTION**  
**LITTLE MEADOWS BOROUGH**  
 Adopted in accord with the Pennsylvania Municipalities Planning Code this \_\_\_ day of \_\_\_\_\_, 2007, at a duly convened meeting of the Board of Supervisors of Little Meadows Borough, Susquehanna County, Pennsylvania.

Attest:

---

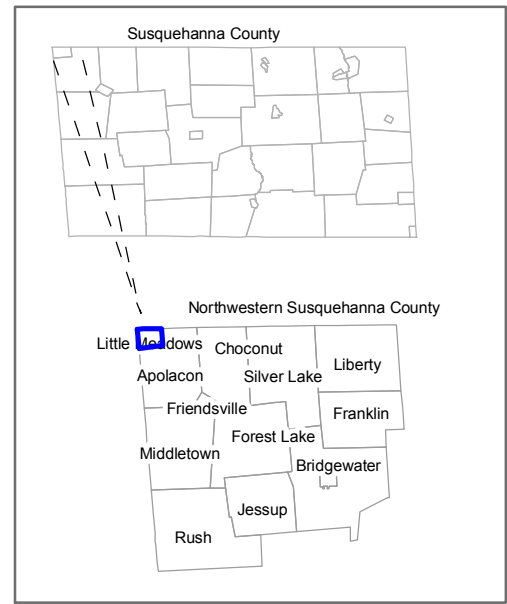


---



---

This Zoning Map has been adopted in cooperation with other municipalities of the Northern Tier Coalition by intermunicipal cooperative agreement under the terms of the Northern Tier Coalition Comprehensive Plan.



- Municipal Boundaries
- Parcels
- Borough Building
- Cemeteries
- Streams
- FEMA Floodplains

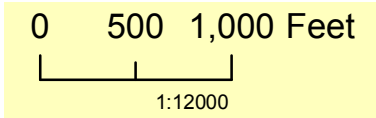
**ZONING DISTRICT BOUNDARIES**

Zoning district boundary lines are intended to follow or be parallel to the center line of streets, streams, and railroads, and lot or property lines as they exist on a recorded deed or plan of record in the Susquehanna County Recorder of Deed's Office and on the Susquehanna County Tax Maps at the time of the enactment of the Zoning Map. Where district boundary lines are delineated by dimensions the boundary shall be parallel to the adjoining road at the specified horizontal dimension measured perpendicularly from the centerline of the road. In cases where a stream, pond or lake is surrounded by a zoning district such stream, pond or lake shall be considered a part of the zoning district.

Apolacon Township



**DRAFT**



COMMUNITY PLANNING & MANAGEMENT, LLC  
 PUBLIC & PRIVATE COMMUNITY PLANNING, DEVELOPMENT & MANAGEMENT



CARSON HELFRICH  
 HCR #1 BOX 59, PAUPACK, PA 18451  
 570-857-0282 (telephone & fax)  
 carson@communityplanning.biz  
 communityplanning.biz

WORKING TOGETHER FOR BETTER COMMUNITIES

GIS and Mapping Services provided by:



- Zoning Districts**
- R - Residential District
  - RA - Rural-Agricultural District
  - Village Commercial District

**LITTLE MEADOWS BOROUGH**  
 SUSQUEHANNA COUNTY, PENNSYLVANIA

**OFFICIAL**  
**ZONING MAP**  
 2007