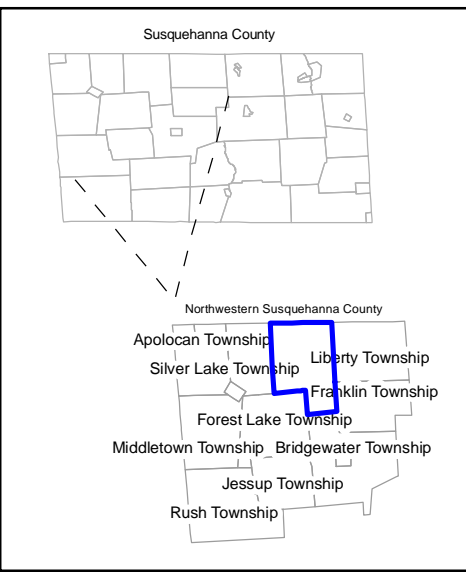


C h o c o n u t T o w n s h i p

L i b e r t y T o w n s h i p

F o r e s t L a k e T o w n s h i p

F r a n k l i n T o w n s h i p



**ADOPTION
SILVER LAKE TOWNSHIP**

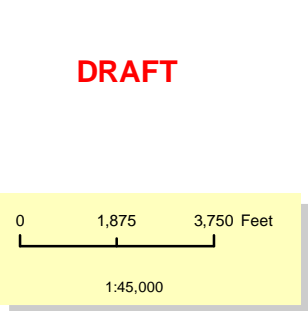
Adopted in accord with the Pennsylvania Municipalities Planning Code this ___ day of _____, 2008, at a duly convened meeting of the Board of Supervisors of Silver Lake Township, Susquehanna County, Pennsylvania.

Attest:

This Zoning Map has been adopted in cooperation with other municipalities of the Northern Tier Coalition by intermunicipal cooperative agreement under the terms of the Northern Tier Coalition Comprehensive Plan.



GIS and Mapping services provided by:



- Municipal Boundaries
- Parcels
- Township Building
- Cemeteries
- Streams
- FEMA Floodplains
- Lakes

- Zoning Districts**
- R - Residential District
 - RA - Rural-Agricultural District

COMMUNITY PLANNING & MANAGEMENT, LLC
PUBLIC & PRIVATE COMMUNITY PLANNING, DEVELOPMENT & MANAGEMENT

CARSON HELFRICH
HCR #1 BOX 59 PAUPACK, PA 18451
570-857-0282 (telephone & fax)
carson@communityplanning.biz
communityplanning.biz

WORKING TOGETHER FOR BETTER COMMUNITIES

ZONING DISTRICT BOUNDARIES

Zoning district boundary lines are intended to follow or be parallel to the center line of streets, streams, and railroads, and lot or property lines as they exist on a recorded deed or plan of record in the Susquehanna County Recorder of Deed's Office and on the Susquehanna County Tax Maps at the time of the enactment of the Zoning Map. Where district boundary lines are delineated by dimensions the boundary shall be parallel to the adjoining road at the specified horizontal dimension measured perpendicularly from the centerline of the road. In cases where a stream, pond or lake is surrounded by a zoning district such stream, pond or lake shall be considered a part of the zoning district.

SILVER LAKE TOWNSHIP
SUSQUEHANNA COUNTY, PENNSYLVANIA

**OFFICIAL
ZONING MAP
2008**